

WE'RE GROWERS,  
JUST ASK

HOW WE GROW

WHAT WE GROW

CUSTOM GROW

SEASONAL GROW

DELIVERY



**GETTING  
DIRTY**  
*without*  
**FEELING  
GUILTY.**

Ask us how to get started with your bulk seasonal grow.

WE'RE GROWERS,  
JUST ASK

HOW WE GROW

WHAT WE GROW

CUSTOM GROW

SEASONAL GROW

DELIVERY

**GRW**

**IN SPRING,**  
*at the  
end of the day*  
**YOU SHOULD  
SMELL  
LIKE DIRT.**

Ask us how to get started with your bulk seasonal grow.

WE'RE GROWERS,  
JUST ASK

HOW WE GROW

WHAT WE GROW

CUSTOM GROW

SEASONAL GROW

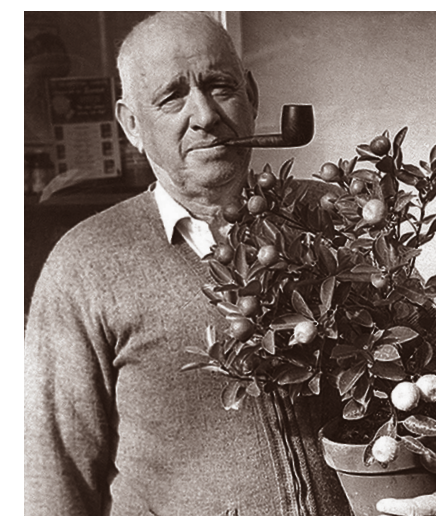
DELIVERY



## Radebaugh History

Back in 1924, George W. Radebaugh established Radebaugh's Florist & Greenhouses at its present location in Towson, Maryland just north of Baltimore. The initial purchase of fifty "cold sash" provided the means to produce the first crop of garden plants and in 1928, the first two greenhouses were constructed for growing cut flowers and plants.

The flower shop was built in Towson in 1940 and served as not only a retail florist store, but also as a home for the Radebaugh family until 1973. The florist product line was expanded in the seventies, to include not only fresh flowers, but also silk flowers, green plants, blooming plants, giftware and fruit baskets.



**ONLY NATURE**  
*has more*  
**EXPERIENCE.**

WE'RE GROWERS,  
JUST ASK

HOW WE GROW

WHAT WE GROW

CUSTOM GROW

SEASONAL GROW

DELIVERY



## Philosophy

Back in 1924, George W. Radebaugh established Radebaugh's Florist & Greenhouses at its present location in Towson, Maryland just north of Baltimore. The initial purchase of fifty "cold sash" provided the means to produce the first crop of garden plants and in 1928, the first two greenhouses were constructed for growing cut flowers and plants.

The flower shop was built in Towson in 1940 and served as not only a retail florist store, but also as a home for the Radebaugh family until 1973. The florist product line was expanded in the seventies, to include not only fresh flowers, but also silk flowers, green plants, blooming plants, giftware and fruit baskets.

## EARTH-FRIENDLY

Quiae. Qui volupta estectem repre pro volorporum ernatis et explibus sanihil iquiatis minctia consequidis as verio. Ut volor ratem reium aborem. Dellam, odipsanti ut maion con nos nisit arum faccumquatem latur solorererum volor rem id quam evellabo. Et qui ant ilit ut ene dus escid mi, ut pra suntiis est, occatem velendae. Itatatiis evel estotatis nos ius autatem poressinis quam quam exped quunt hil et laboria vero bea verit qui nonestiuntia inverae peditis sim

George W  
**Radebaugh**  
WHOLESALE GROWERS

WE'RE GROWERS,  
JUST ASK

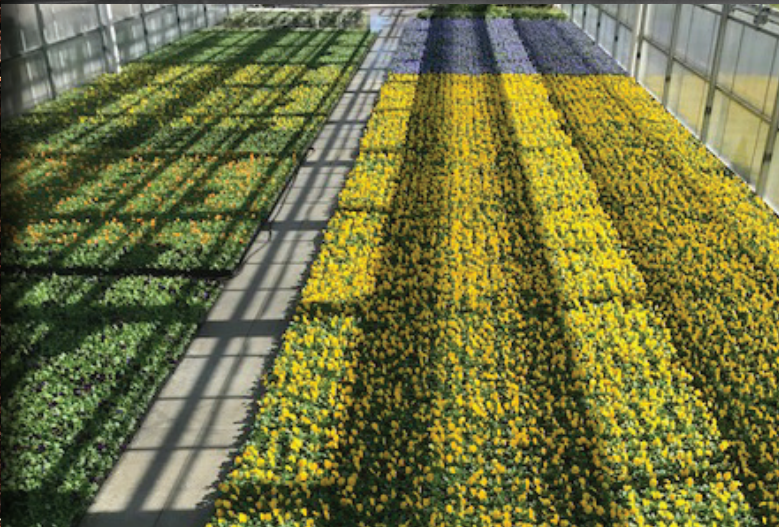
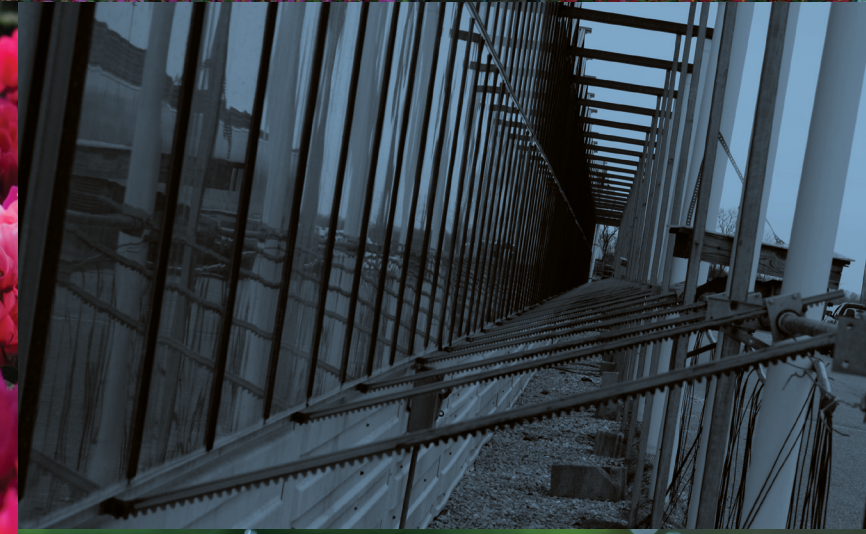
HOW WE GROW

WHAT WE GROW

CUSTOM GROW

SEASONAL GROW

DELIVERY



George W  
**Radebaugh**  
WHOLESALE GROWERS



WE'RE GROWERS,  
JUST ASK

HOW WE GROW

WHAT WE GROW

CUSTOM GROW

SEASONAL GROW

DELIVERY



PERENNIALS



SEASONAL



ANNUALS

